



# REFERENCE

Fixed Frame Projection Screen

## ASSEMBLY INSTRUCTIONS



## Caution: preliminary notice

Assembling this screen and installing it requires some professional know how. You will need 2 persons, as the screen is too heavy and bulky to be handled by a single person. You will need to be able to evaluate a totally safe way to fix the provided brackets to the wall where it is to be installed, and to provide it. It can be rubber, steel or plastic wall plugs, or hollow wall anchors.

## REFERENCE COMPONENTS LIST

- |                |  |
|----------------|--|
| Main frame     | 1. Top profile – Quantity 1 or 2 (or 3 for screens >200")  |
|                | 2. Bottom profile – Quantity 1 or 2 (or 3 for screens >200")   |
|                | 3. Side profiles – Quantity 2  |
|                | 4. Mitre angle brackets – Quantity 4   |
|                | 5. "Prolongator" horizontal profiles joining brackets – Quantity 2 (for screens larger than 96") or 4 (for screens larger than 200") |
| Wall Brackets: | 6. Frame Z-Brackets – Quantity 2 or 4 (for screens over 160")  |
|                | 7. Wall Z-Brackets – Quantity 2 or 4 (for screens over 160")   |
|                | 8. Wall snap-in bracket - Quantity 2 or 4 (for screens over 160")  |
| Fabric:        | 9. Enlightor (white) - supplied in cardboard tube  |
|                | 10. Black backing fabric – supplied folded   |
| Tools:         | 11. Spatula – Quantity 1   |
|                | 13. Hex key – Quantity 2   |
|                | 14. Plastic foil (dust protector)– Quantity 1  |
| Only >96"      | 15. Stiffening bars – Quantity 2 or 4 (for screens larger than 180")   |
|                | 16. Corner support plate with bolts and nuts – Quantity 4<br>(optional for screens over 180")  |
|                | 17. Gloves – Quantity 1 pair   |

### **You will also need the following items:**

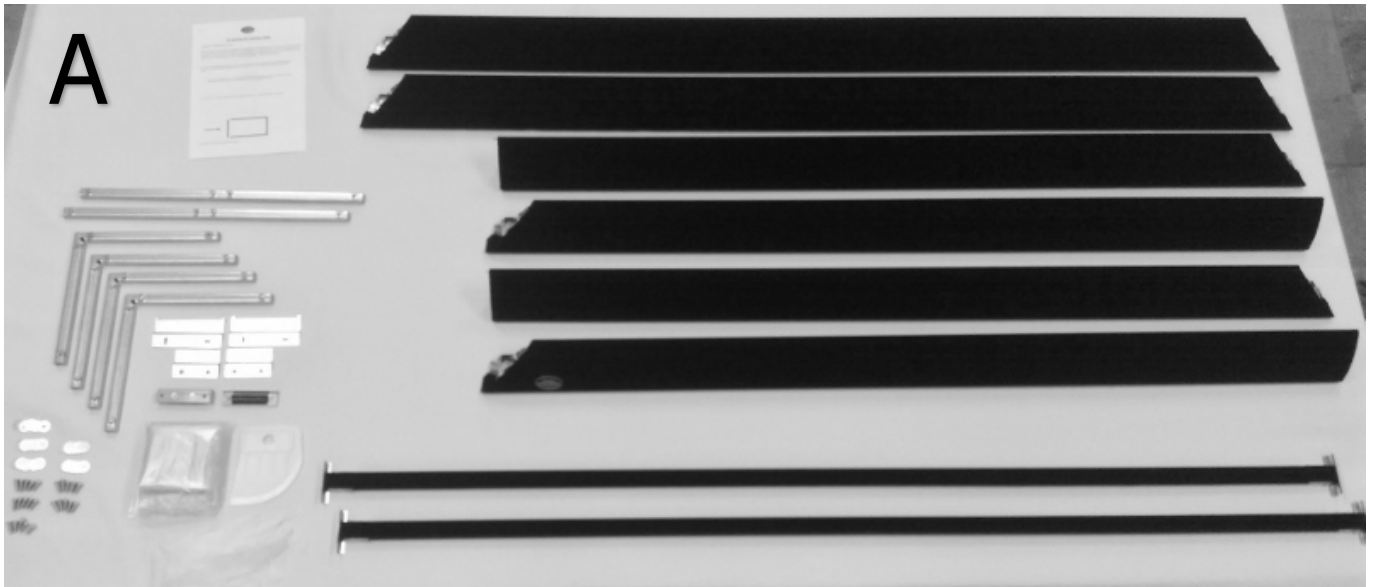
Tape measure, spirit level, sharp scissors, screws and wall plugs for fixing to wall.

The following diagram shows the parts with their corresponding item numbers.

The following pictures shows the parts with their corresponding item numbers.

A – for screens 100” and over

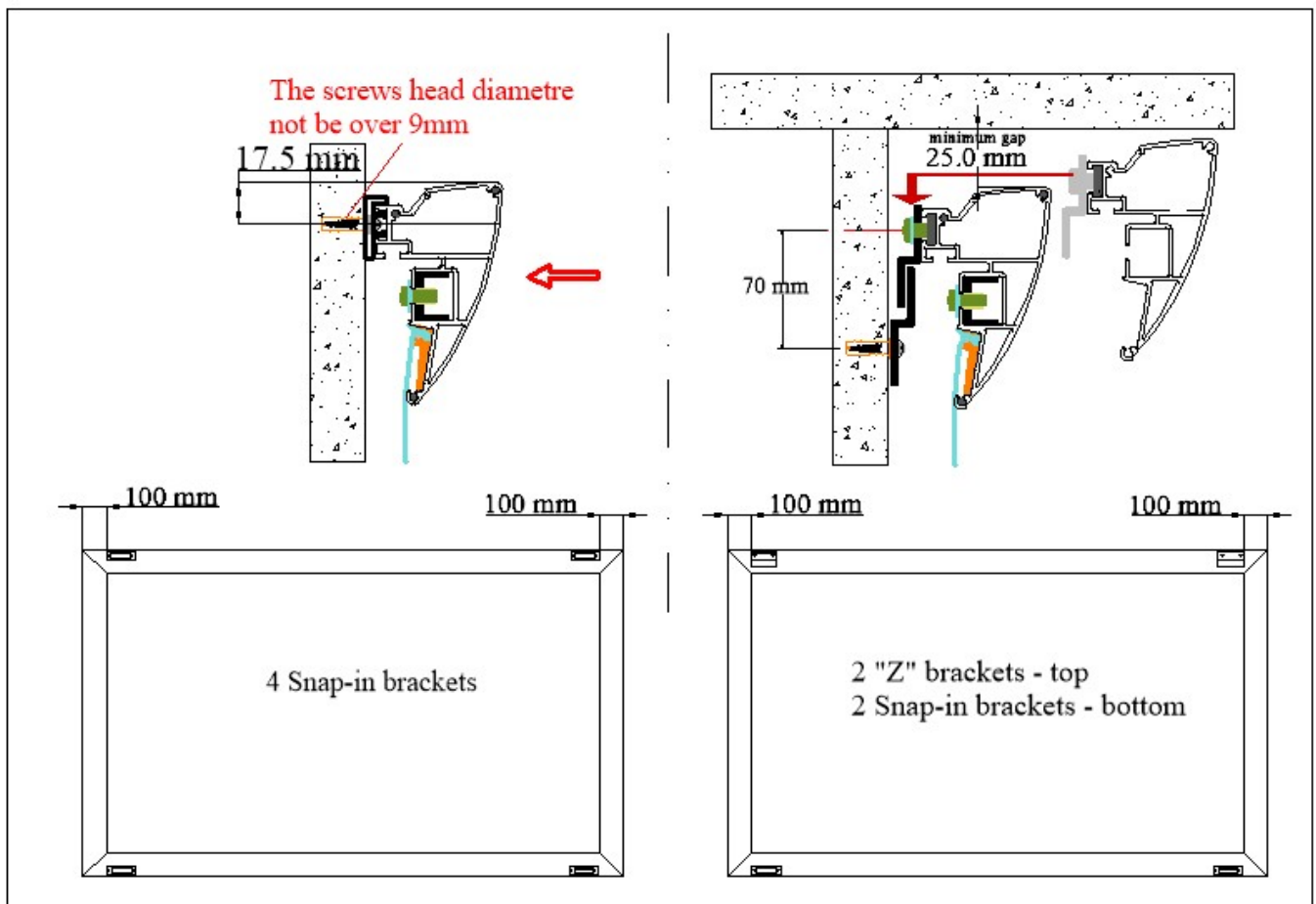
B – for screens 96” and less



For screens over 200” we increase quantity of horizontal profiles to 6 and prolongators to 4.

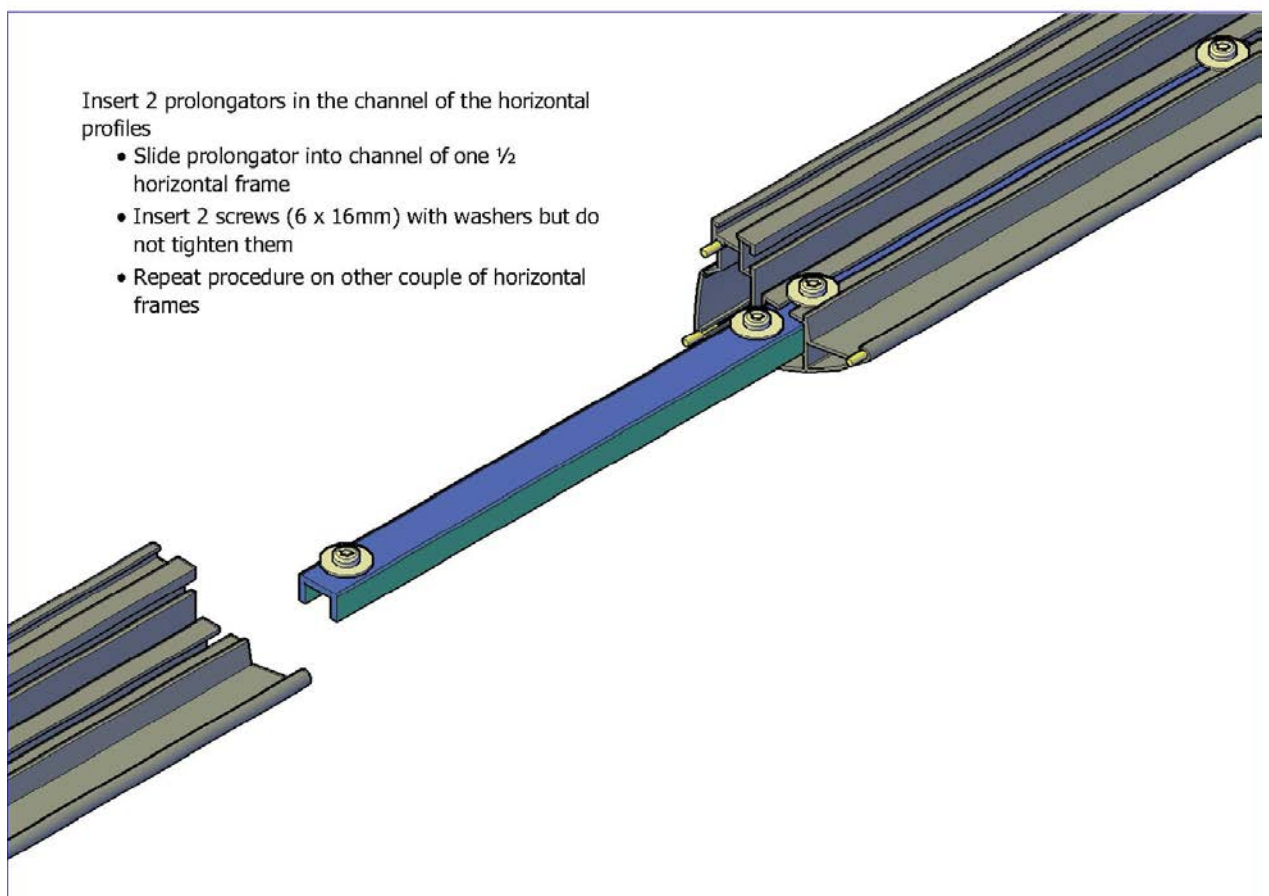
## ASSEMBLY ADVICE

- Clear a space sufficiently larger than the external dimensions of the screen with access to all sides – ideally this should be a clean, flat surface to protect the screen from damage.
- Carefully remove all of the components from the packaging and check them against the components list.
- Locate the plastic sheet and spread it out onto your clean assembly surface.
- Determine the positions of the wall screws (1/4" or 6mm). The lateral position of the frame brackets (item 6) can be changed by loosening the retaining screws and sliding the brackets to the required position. **Use wall plugs of suitable size and strength for the screen.**
- Minimum distance of wall bracket from edge of frame should be more than 100 mm.



## ASSEMBLY ADVICE

1. Place the protective sheet on a wide, clean surface sensibly larger than the complete screen.  
Place all profiles on the protective sheet. The black velvet side must be face down.
2. If you install screen with size under 100" go to page 6
- 3.

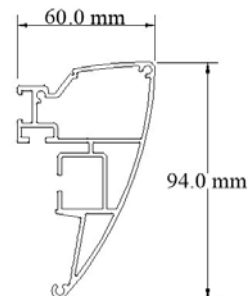
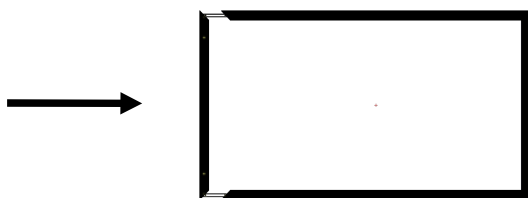
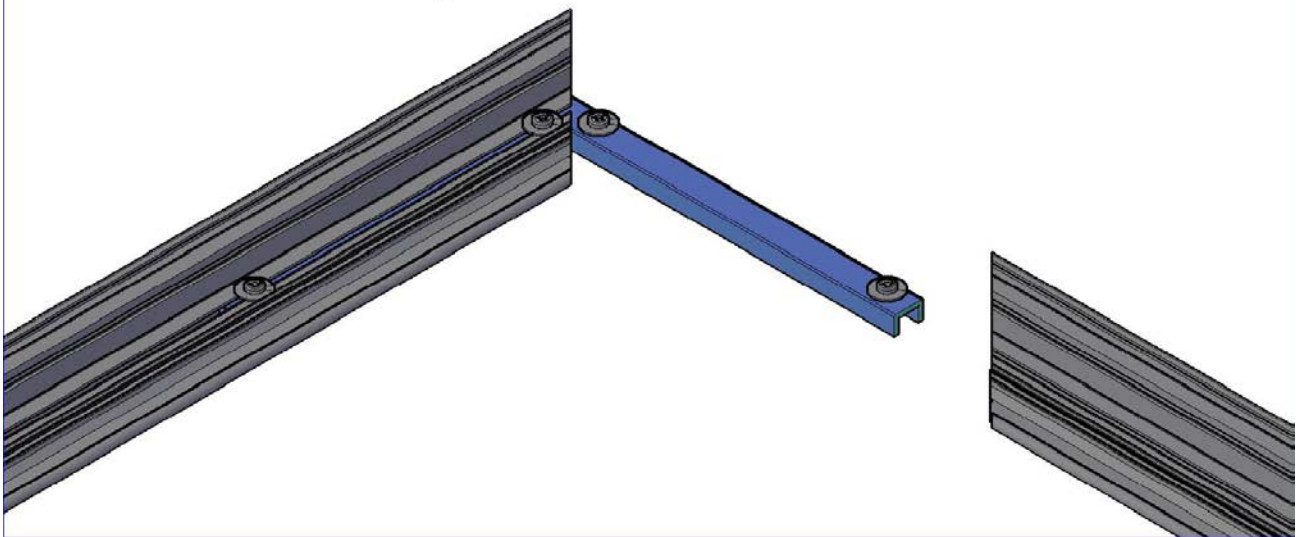


- Slide other ½ horizontal frame (make sure all pins are in the right position)
- Tighten all screws

4.

Insert 4 angle brackets into channels of the vertical profiles

- Slide angle brackets into channel of each vertical profiles
- Insert screws (6 x 16 mm) with washers but do not tighten
- Slide the first horizontal section onto the top angle bracket
- Slide the second horizontal section onto the bottom angle bracket
- Insert screws (6 x 16mm) with washers and using hex key tighten
- Slide simultaneously the two angle brackets of the second vertical profile into the channel of each horizontal sections
- Insert remained screws and tighten them all

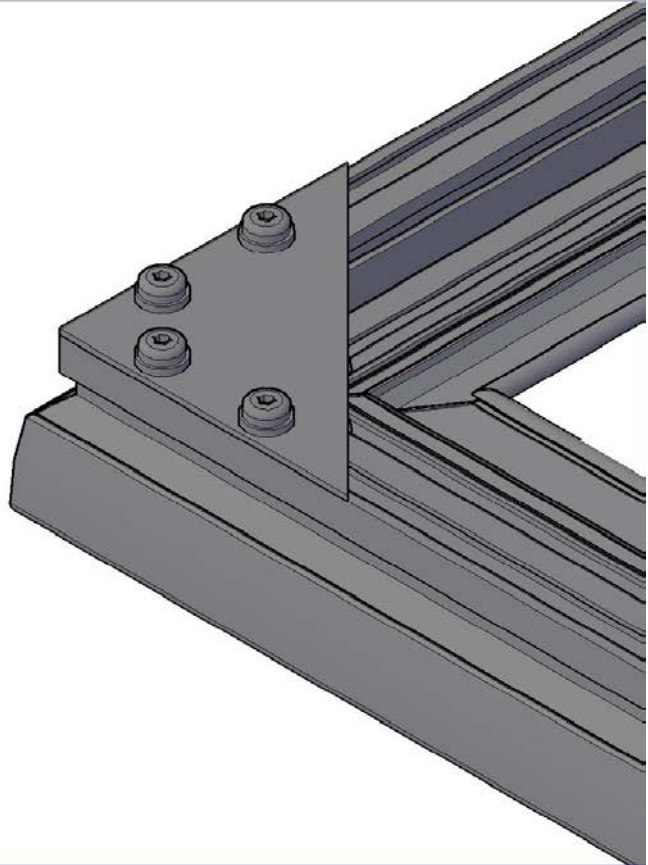


## For screens over 180"

5.

### Screens over 180"

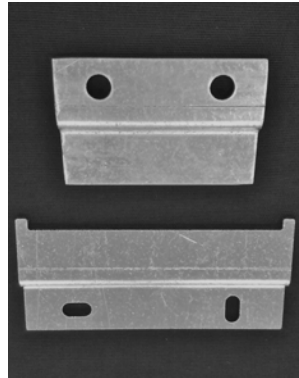
- Place vertical profiles on foam. Slide angle brackets into channel of each vertical profiles
- Insert screws (6 x 16 mm) with washers but do not tighten
- Slide the first horizontal section onto the top angle bracket
- Slide the second horizontal section onto the bottom angle bracket
- Slide provided square nuts (4 in each corner) for corner support plates
- Insert screws (6 x 16mm) with washers and using hex key tighten
- Slide simultaneously the two angle brackets of the second vertical profile into the channel of each horizontal sections
- Insert remained screws and tighten them
- Place corner support plates (1-4) and tighten them





6. Select the type of wall brackets between 2 solutions:

- 2 x “Z” brackets (coming as couple) and 2 x snap-in brackets: this is the standard and simplest solution. It will apply in most cases

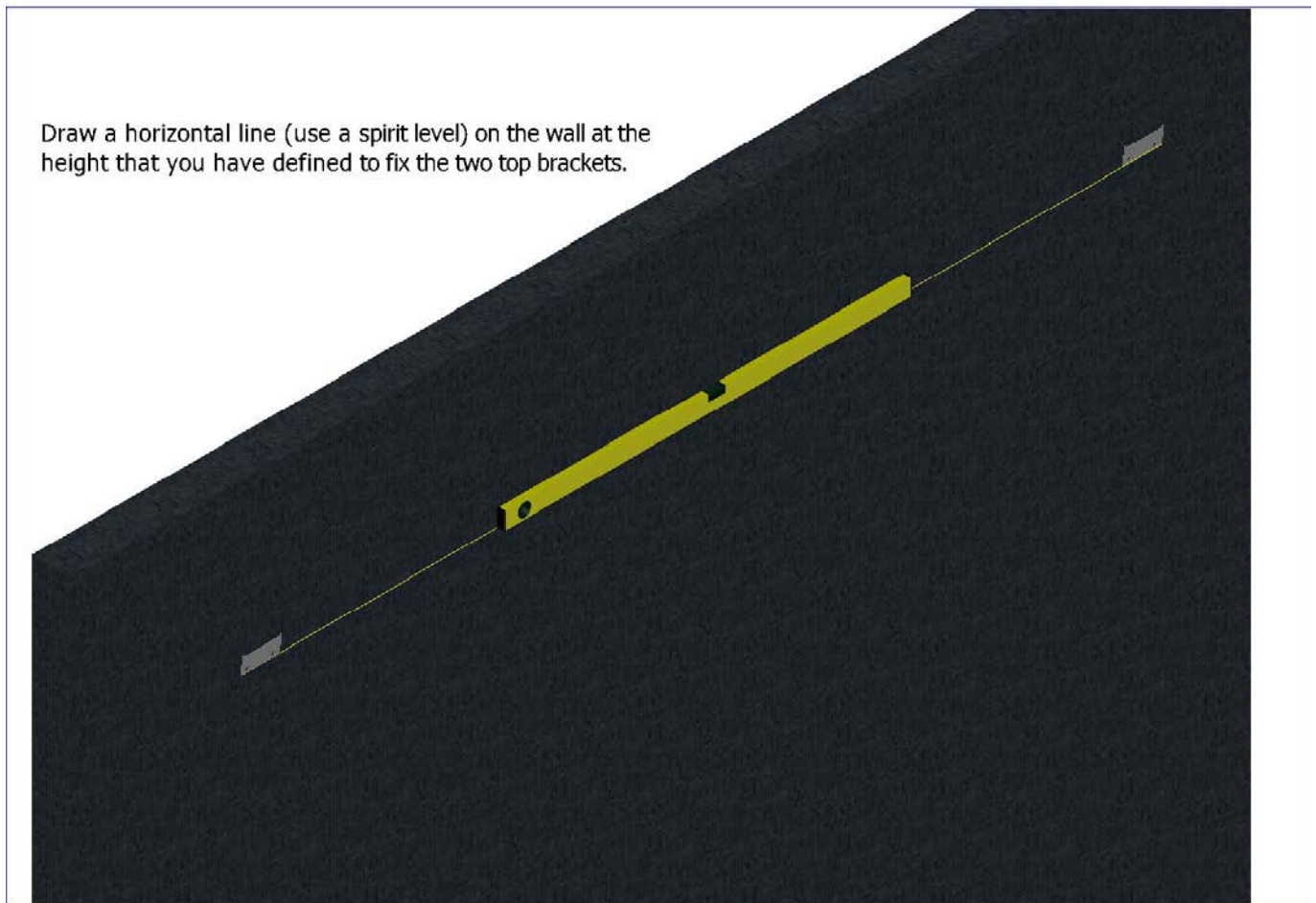


- 4 snap-in brackets: this is a fixing solution to install the screen in a recessed place where it cannot be lifted to be hanged



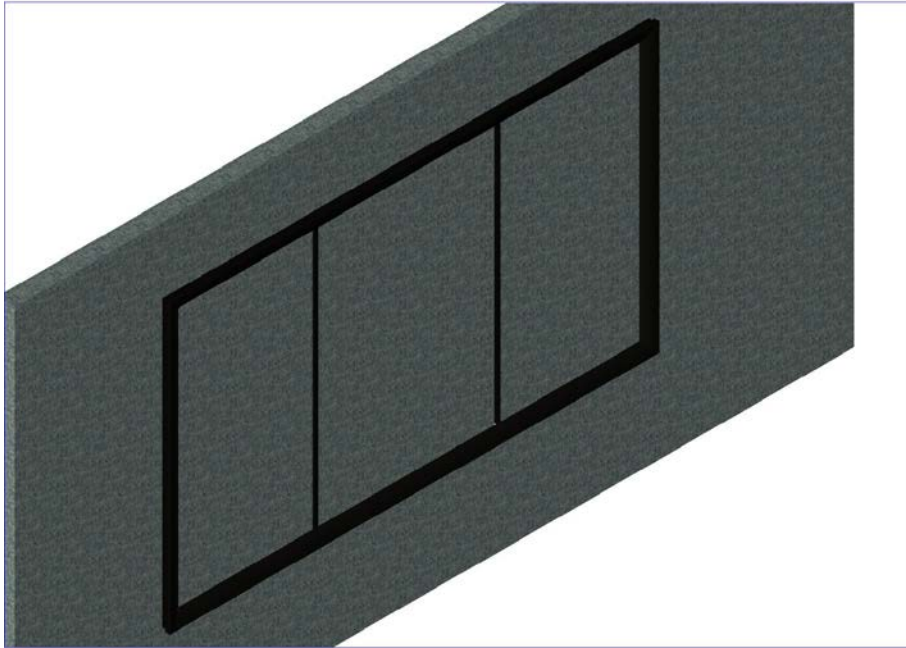


7. Fix 2 wall brackets (Z or snap-in) onto the wall.

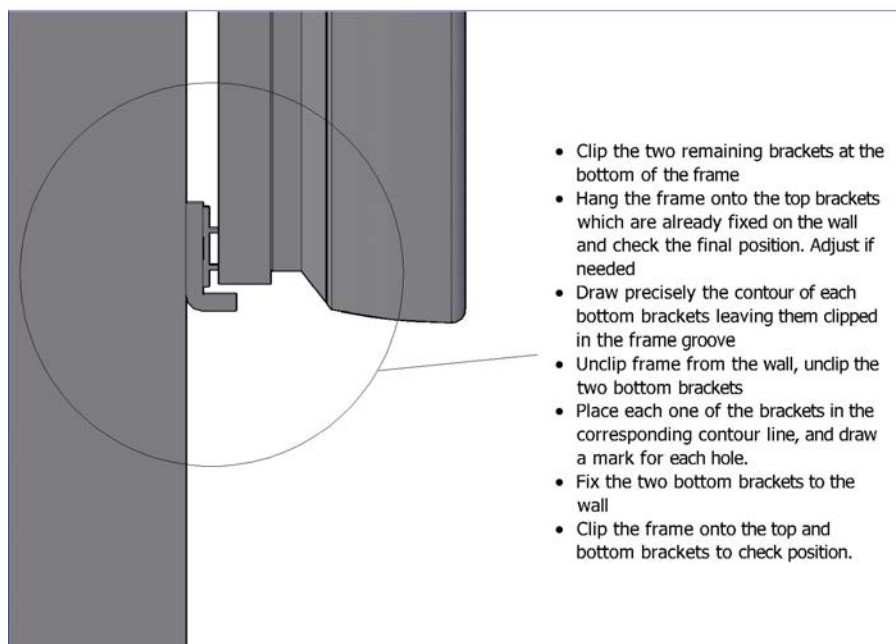


If you use the “Z” brackets:

- Install frame Z brackets in position you determine
- Clip two snap-in brackets at the bottom of the frame
- Hang screen on the wall and check the final position. Adjust if needed
- Draw precisely the contour of each bottom bracket leaving them clipped in the frame groove
- Unhook the frame, unclip bottom brackets
- Place each one of the brackets in the corresponding contour line and draw a mark for each hole
- Fix the two bottom brackets to the wall
- Hook the frame onto the wall to check position

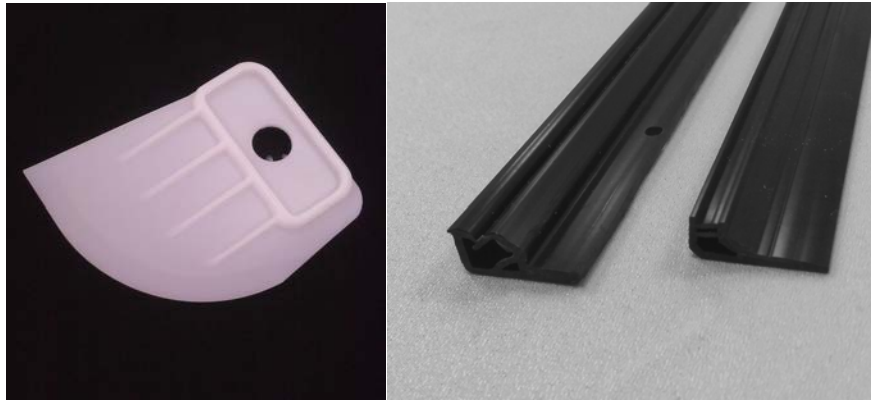


a. If you use the clipping snap-in brackets:



8. Remove the frame from the wall

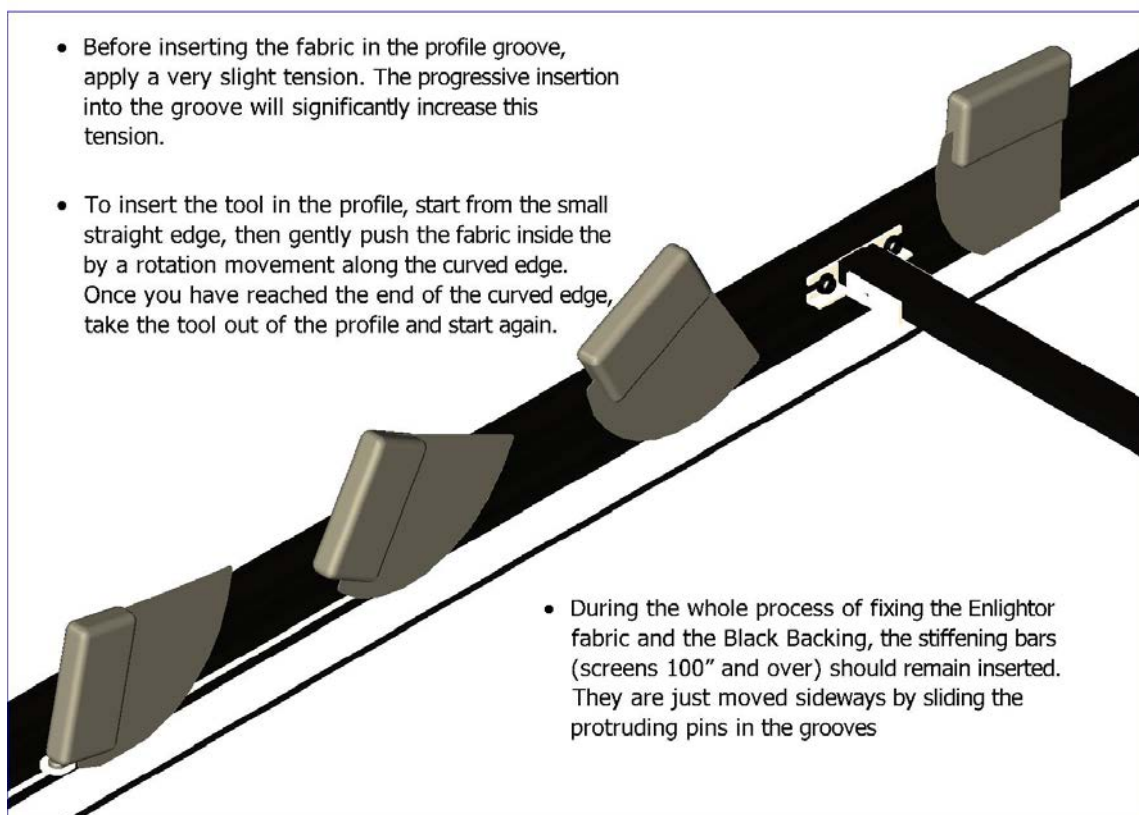
9. Place the frame on the protective sheet; unroll the white and black fabrics. Beware not to stain on the white fabric. Insert the fabric into the groove of the Gripfix profile with the provided spatula. Start by the middle of the four sides (the large sides first), and then progress towards the corners.



Spatula

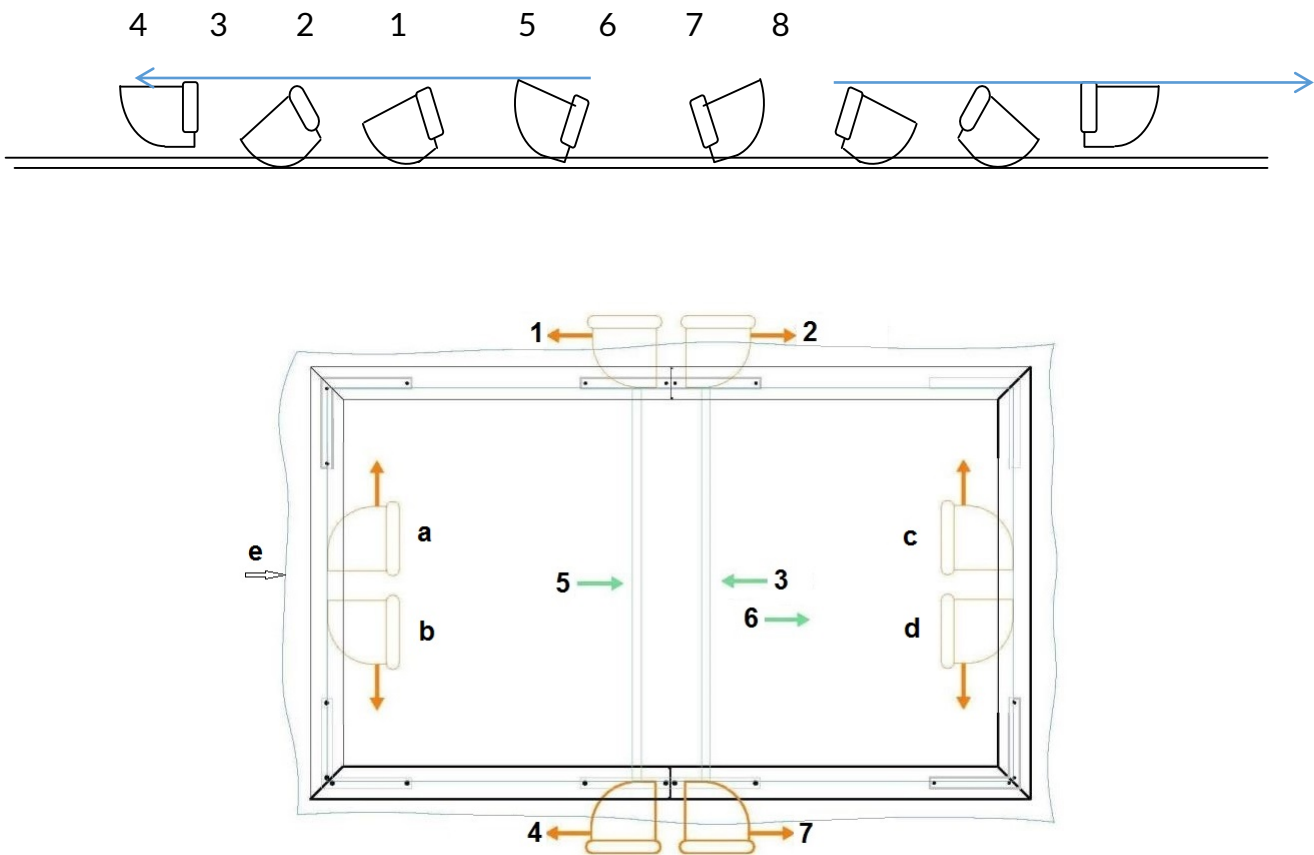
Gripfix profile

It is safer to perceive the insertion position by simply inserting the tool once in the profile without the fabric. Then remove it, place the fabric over the profile and insert it inside.



**Note:**

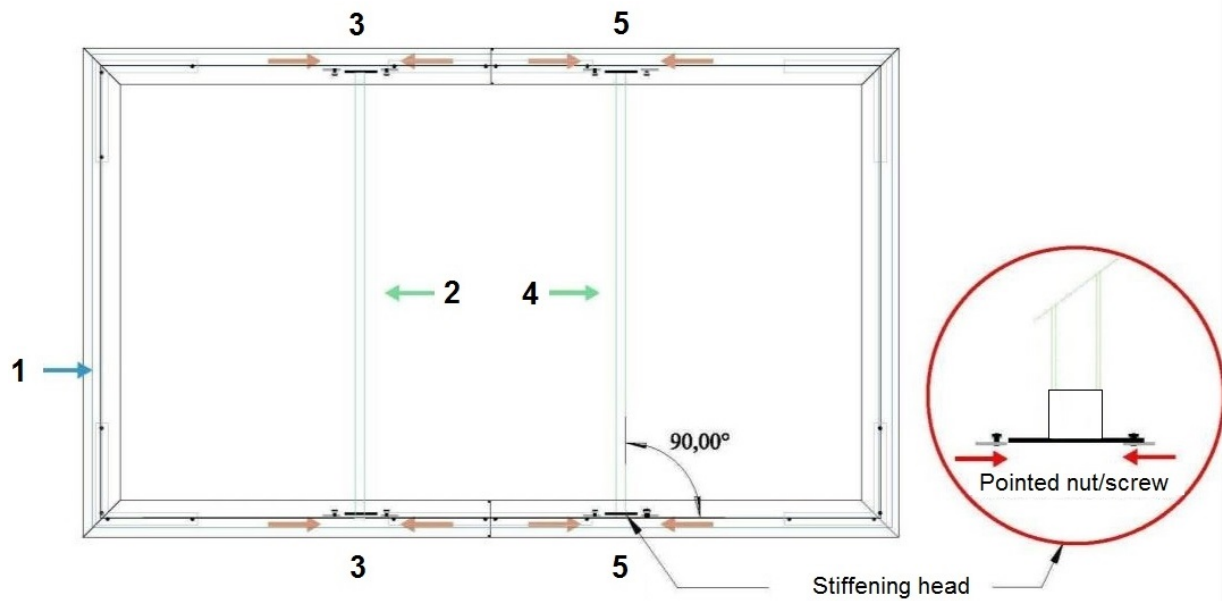
Start from here



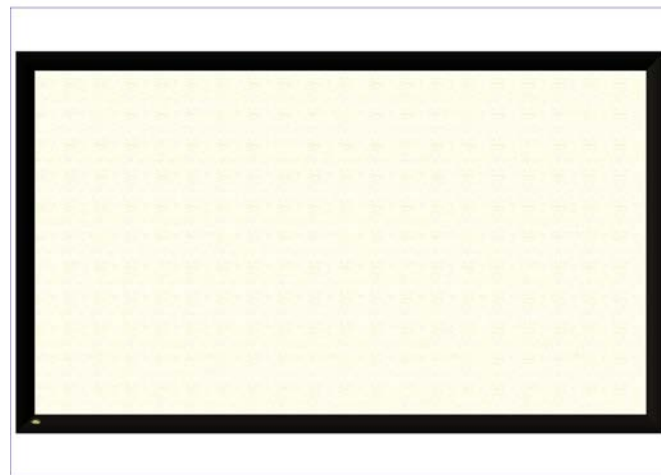
- 1) Use the spatula to insert fabric into the groove of the Gripfix from the centre to the left
- 2) Use the spatula to insert fabric into the groove of the Gripfix from the centre to the right
- 3) Place temporary the first stiffening bar just at the right of the centre
- 4) Use the spatula to insert fabric into the groove of the Gripfix from the centre to the left
- 5) Place temporary the second stiffening bar just at the left of the centre
- 6) Slide the first stiffening bar to the right
- 7) Use the spatula to insert fabric into the groove of the Gripfix from the centre to the right
  - a. Use the spatula to insert fabric into the groove of the Gripfix from the centre to the top
  - b. Do this same in the other side
  - c. Use the spatula to insert fabric into the groove of the Gripfix from the centre to the bottom
  - d. Do this same in the other side
- e. If needed cut the excess fabric

10. Once the white fabric is stretched, check the evenness of the surface. The tension is not to be excessive. In case of a problem, release locally the fabric from the profile, and insert it again.

11. Insert the Black Backing fabric the same way in the same groove as the Enlightor fabric. Stretch it evenly.



- 1) If needed cut the excess black fabric
- 2) Install definitely the first stiffening bar about  $\frac{1}{3}$  of the total width (position usually marked)
- 3) Slide the pointed nut/screw next to the stiffening head and tighten them
- 4) Install definitely the second stiffening bar about  $\frac{1}{3}$  of the total width (position usually marked)
- 5) Slide the pointed nut/screw next to the stiffening head and tighten them



12. Screen is fully assembled.

13. Fix the complete assembly onto a wall by hanging the two Z-brackets fixed on the screen into the wall Z-brackets, then inserting the bottom pi-grips of the lower wall brackets into the corresponding grooves of the screen.  
If you have only snap-in brackets (when a vertical displacement is not possible), then insert the 4 wall bracket pi-grips into the screen groove by pushing it until it clips on the 4 brackets.



## Contact:

Screen Excellence Ltd.  
Unit 136 Bentwaters Parks  
Rendlesham  
Suffolk England  
IP12 2TW

[www.screenexcellence.com](http://www.screenexcellence.com)

[sales@screenexcellence.com](mailto:sales@screenexcellence.com)

Telephone: +44 1394 420 220

Fax: +44 1394 420 203

[twitter.com/ScreenExcel](https://twitter.com/ScreenExcel)